

KOLD-DRAFT

Ice Machine Stacking Instructions

P/N 102139901

**For Mounting GB561, GB564, GB1064 Models
Above GB420 to GB450, GB620 to GB650 and
GB1220 to GB1250 Models**

KDIndustries, Inc.

1525 East Lake Road
Erie, PA 16511-1088 U.S.A.
814-453-6761
FAX: 814-455-6336
www.kold-draft.com

SAFETY WARNINGS AND INFORMATION



CAUTION

KNOWLEDGE OF PROPER INSTALLATION AND SERVICE PROCEDURES IS ESSENTIAL TO THE SAFE OPERATION AND MAINTENANCE OF KOLD-DRAFT EQUIPMENT. REFER ALL INSTALLATION AND SERVICE WORK TO QUALIFIED TECHNICIANS.

ALWAYS DISCONNECT THE POWER SUPPLY BEFORE SERVICING THE EQUIPMENT OR WHEN THE EQUIPMENT WILL NOT BE USED FOR A PERIOD OF TIME. SOME CIRCUITS REMAIN ENERGIZED WHEN THE ICE MACHINE IS SWITCHED OFF.

NEVER OPERATE EQUIPMENT THAT HAS BEEN DAMAGED OR DOES NOT HAVE ALL THE PROTECTIVE COVERS IN PLACE.

NEVER OPERATE EQUIPMENT THAT HAS BEEN ALTERED FROM THE ORIGINAL KOLD-DRAFT SPECIFICATIONS.

SPECIAL ATTENTION SHOULD BE GIVEN TO POTENTIAL HAZARD LABELING ON THE EQUIPMENT AND THE SIGNAL WORDS AND SYMBOLS THAT ARE USED THROUGHOUT THIS MANUAL.

INSTRUCT ALL PERSONNEL IN THE PROPER USE OF THE EQUIPMENT.

CLEAN UP ANY SPILLAGE IMMEDIATELY.

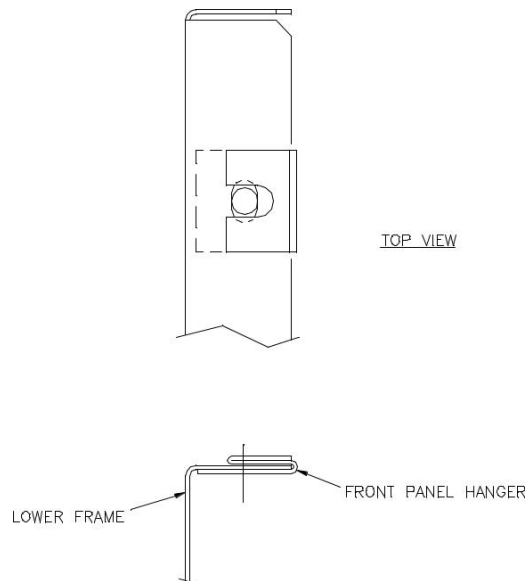
FAILURE TO COMPLY WITH ALL KOLD-DRAFT INSTALLATION GUIDELINES MAY CAUSE PERSONAL INJURY, EQUIPMENT OR PROPERTY DAMAGE AND MAY VOID THE PRODUCT WARRANTY.

STACKING INSTRUCTIONS

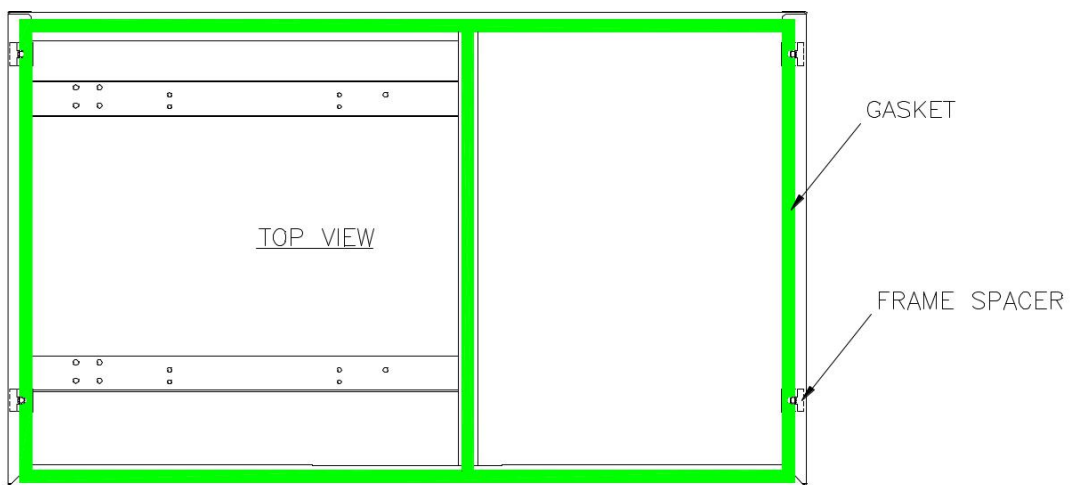
NOTE- WHEN APPLYING THIS STACKING KIT, THE GB561, GB564 OR GB1064 MODEL MUST BE POSITIONED ABOVE THE OLDER MODEL ICE MACHINE.

Remove the cabinet panels from the upper and lower ice machines.

Mount the frame spacers on the top side panel flanges of the lower ice machine frame. Position so the spacer holes are aligned with the holes in the frame.



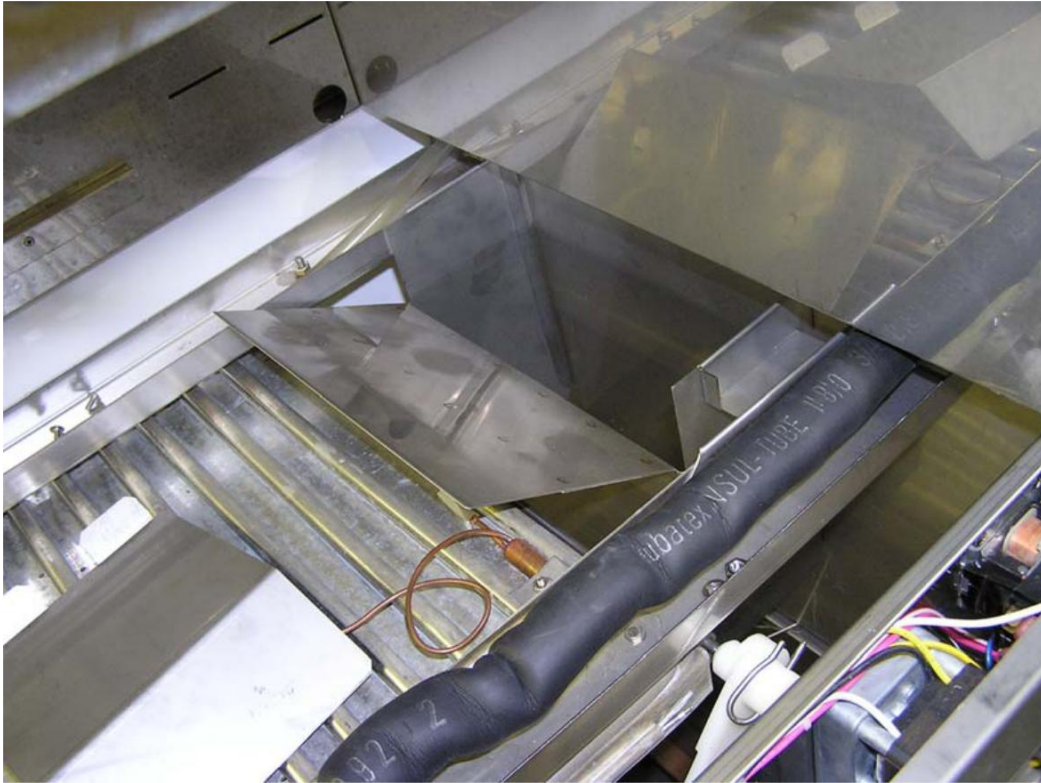
Apply the gasket provided to the top of the lower ice machine frame as shown. Place the gasket over the frame spacers to secure them in position.



GASKET APPLICATION

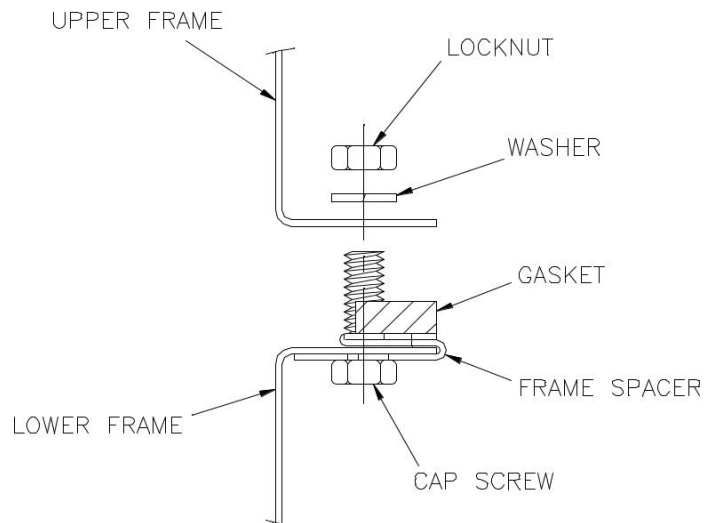
STACKING INSTRUCTIONS

Position the stacking chute in the lower machine as shown. Additional instructions for installing this stacking chute are provided with this kit.



Carefully lift the upper machine and place it on top of the lower machine. Align the back and sides of the two frames.

Fasten the frames together using the screws, washers and lock nuts provided

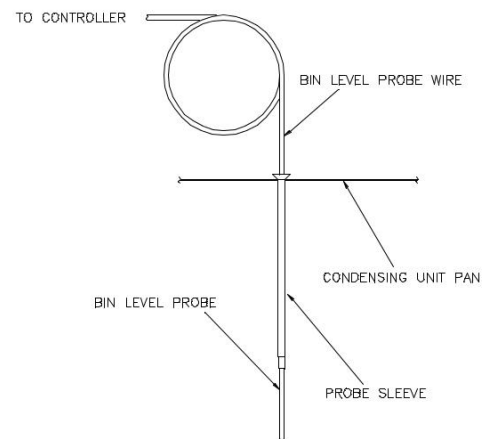
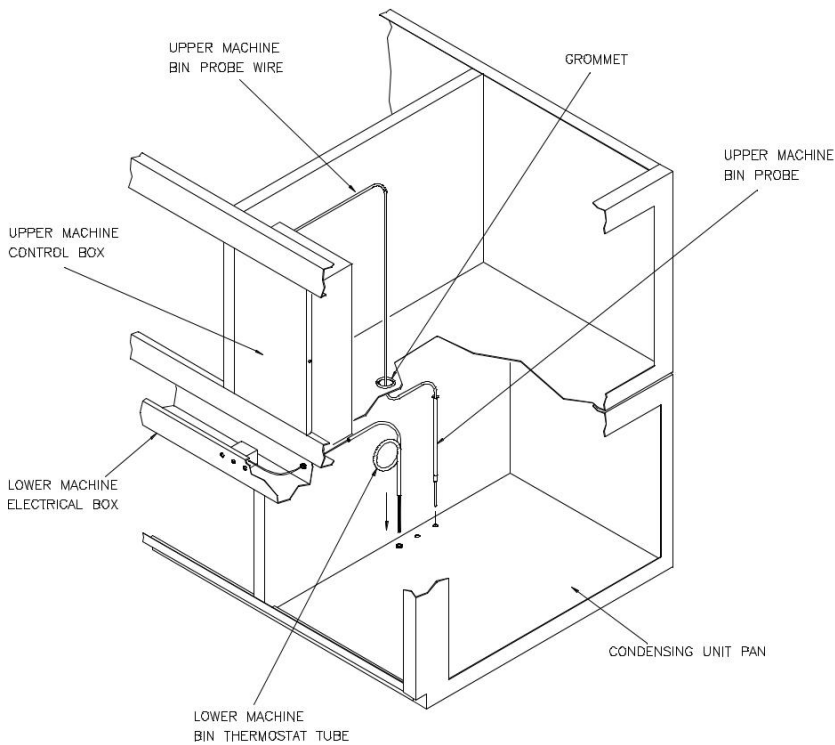


STACKING INSTRUCTIONS

Replace the front and back deflectors, provided with the ice machine, with the deflectors provided in the stacking kit. Install the deflectors into the slots in the back wall and front rail. Push down on the rear deflector until it engages the stacking chute and snaps in place.



Remove the knockout in the upper machine condensing unit pan and insert the grommet provided. Feed the bin probe from the upper machine, through the grommet and position in one of the open holes in the lower condensing unit pan.



UPPER MACHINE BIN LEVEL PROBE IN POSITION